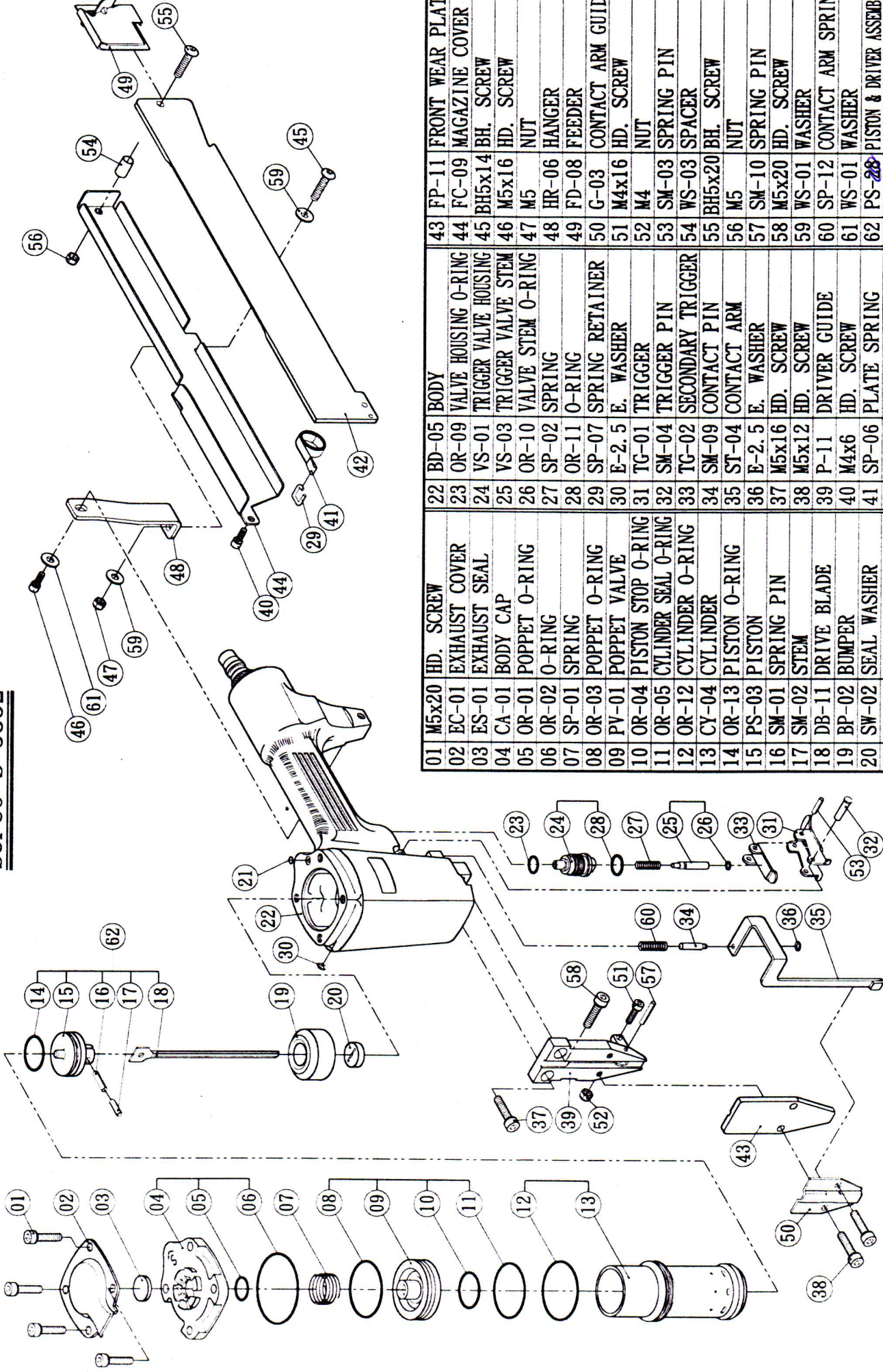


SUPCO S-3832



| | | | | | |
|----|----------------------------|----|-----------------------------|----|--------------------------------|
| 01 | M5x20 HD. SCREW | 22 | BD-05 BODY | 43 | FP-11 FRONT WEAR PLATE |
| 02 | EC-01 EXHAUST COVER | 23 | OR-09 VALVE HOUSING O-RING | 44 | FC-09 MAGAZINE COVER |
| 03 | ES-01 EXHAUST SEAL | 24 | VS-01 TRIGGER VALVE HOUSING | 45 | BH5x14 BH. SCREW |
| 04 | CA-01 BODY CAP | 25 | VS-03 TRIGGER VALVE STEM | 46 | M5x16 HD. SCREW |
| 05 | OR-01 POPPET O-RING | 26 | OR-10 VALVE STEM O-RING | 47 | M5 NUT |
| 06 | OR-02 O-RING | 27 | SP-02 SPRING | 48 | HR-06 HANGER |
| 07 | SP-01 SPRING | 28 | OR-11 O-RING | 49 | FD-08 FEEDER |
| 08 | OR-03 POPPET O-RING | 29 | SP-07 SPRING RETAINER | 50 | G-03 CONTACT ARM GUIDE |
| 09 | PV-01 POPPET VALVE | 30 | E-2.5 E. WASHER | 51 | M4x16 HD. SCREW |
| 10 | OR-04 PISTON STOP O-RING | 31 | TG-01 TRIGGER | 52 | M4 NUT |
| 11 | OR-05 CYLINDER SEAL O-RING | 32 | SM-04 TRIGGER PIN | 53 | SM-03 SPRING PIN |
| 12 | OR-12 CYLINDER O-RING | 33 | TG-02 SECONDARY TRIGGER | 54 | WS-03 SPACER |
| 13 | CY-04 CYLINDER | 34 | SM-09 CONTACT PIN | 55 | BH5x20 BH. SCREW |
| 14 | OR-13 PISTON O-RING | 35 | ST-04 CONTACT ARM | 56 | M5 NUT |
| 15 | PS-03 PISTON | 36 | E-2.5 E. WASHER | 57 | SM-10 SPRING PIN |
| 16 | SM-01 SPRING PIN | 37 | M5x16 HD. SCREW | 58 | M5x20 HD. SCREW |
| 17 | SM-02 STEM | 38 | M5x12 HD. SCREW | 59 | WS-01 WASHER |
| 18 | DB-11 DRIVE BLADE | 39 | P-11 DRIVER GUIDE | 60 | SP-12 CONTACT ARM SPRING |
| 19 | BP-02 BUMPER | 40 | M4x6 HD. SCREW | 61 | WS-01 WASHER |
| 20 | SW-02 SEAL WASHER | 41 | SP-06 PLATE SPRING | 62 | PS-28 PISTON & DRIVER ASSEMBLY |
| 21 | OR-08 PIPE O-RING | 42 | MZ-17 MAGAZINE | | |