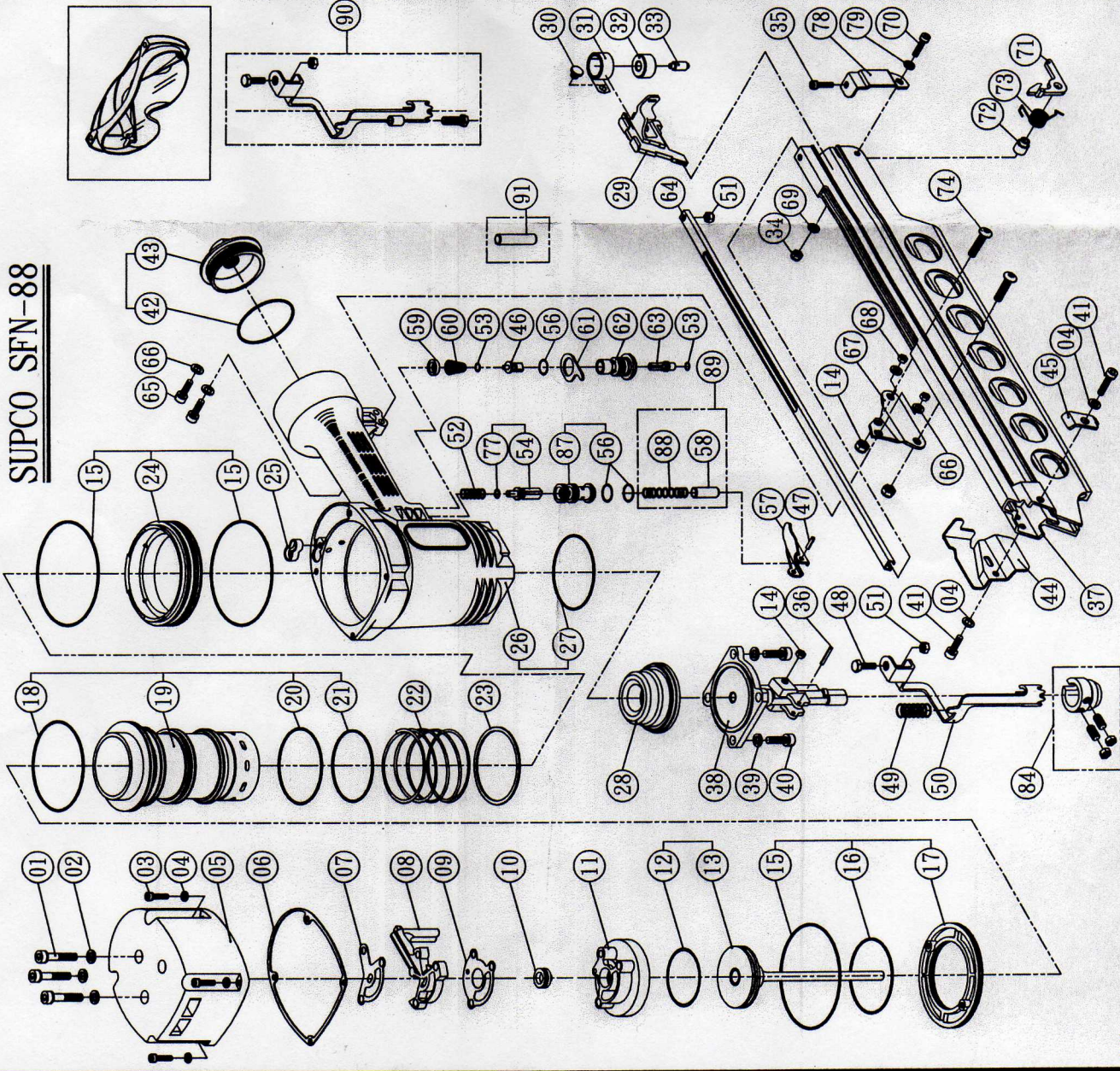


# SUPCO SFN-88



01	M6x45	HD. SCREW	44	WS-18	MAGAZINE GUARD B
02	WS-10	SPRING WASHER M6	45	WS-19	MAGAZINE GUARD A
03	M6x25	HD. SCREW	46	VS-09	VALVE PLUNGER
04	WS-11	SPRING WASHER M6	47	SM-15	SPRING PIN
05	CA-04	BODY CAP	48	HC5x16	HC. SCREW
06	WS-12	GASKET A	49	SP-19	SPRING
07	WS-13	GASKET B	50	ST-81	CONTACT ARM
08	PV-07	EXHAUST PIPE	51	M5	NUT
09	WS-14	GASKET C	52	SP-20	SPRING
10	PV-16	EXHAUST VALVE	53	OR-44	O-RING
11	PV-06	POPPET VALVE	54	VS-38	PLUNGER A
12	OR-36	PISTON O-RING	56	OR-45	O-RING
13	PS-32	PISTON & DRIVER ASSEMBLY	57	TG-10	TRIGGER
14	M6	NUT	58	VS-39	PLUNGER B
15	OR-37	CYLINDER PLATE O-RING	59	ES-08	VALVE PACKING
16	OR-38	CYLINDER PLATE O-RING	60	SP-21	SPRING
17	CY-08	CYLINDER PLATE	61	FC-13	VALVE PLATE
18	OR-39	CYLINDER O-RING	62	VS-12	TRIGGER VALVE BUSHING
19	CY-07	CYLINDER	63	VS-13	TRIGGER PLUNGER
20	OR-40	CYLINDER O-RING	64	FC-14	NAIL RAIL
21	OR-41	CHECK VALVE O-RING	65	M5x25	HD. SCREW
22	SP-17	SPRING	66	WS-01	WASHER
23	WS-15	BASE WASHER	67	HR-20	HANGER
24	CY-09	CYLINDER GUIDE	68	M5	NUT
25	ES-07	PACKING A	69	WS-07	WASHER
26	BD-18	BODY	70	M4x25	HD. SCREW
27	OR-42	BODY O-RING	71	FC-16	STOP LEVER
28	BP-06	BUMPER	72	SM-20	COLLAR
29	FD-16	NAIL FEEDER	73	SP-22	SPRING
30	SM-17	SPRING RETAINER	74	BH6x12	BH. SCREW
31	SP-18	PLATE SPRING	77	OR-22	O-RING
32	SM-18	SPRING SLEEVE	78	FC-18	BRACKET
33	SM-19	ROLLER	79	WS-26	WASHER
34	M4	NUT	82	MZ-35	MZASS MAGAZINE ASSEMBLY
35	M5x10	HD. SCREW	84	ST-15	FLUSH DRIVE ATTACHMENT
36	SM-23	SPRING PIN	87	VS-31	VALVE BUSHING
37	MZ-22	MAGAZINE	88	SP-45	SPRING
38	P-18	NOSE	89	VS-40	SEQ. ASSY.
39	WS-17	SPRING WASHER	90	ST-84	DEPTH ADJ. SAFETY
40	M8x25	HD. SCREW	91	VS-41	SAFETY PLUNGER
41	M6x18	HD. SCREW			
42	OR-43	CAP O-RING			
43	CA-05	END CAP			